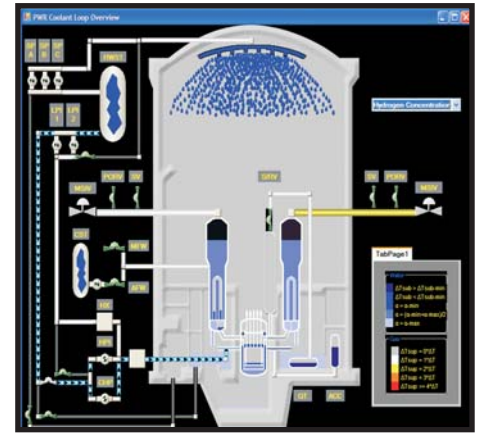
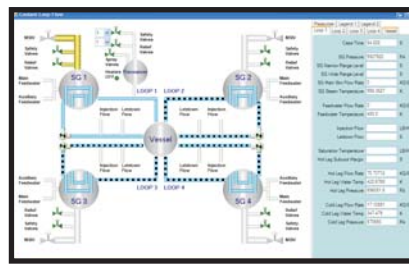
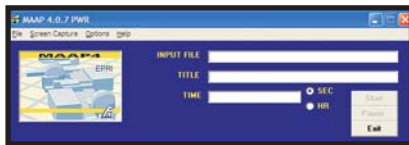
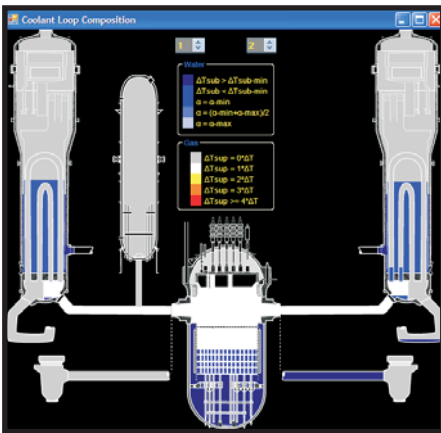


# MAAP (Modular Accident Analysis Program)

## MAAP Training & Analysis:

FAI offers nuclear technology training programs designed to help customers achieve their competency-based learning objectives. A one week course on the use of MAAP is given annually at our facilities. With the combination of the numerous experiments that have been performed at FAI and the broad knowledge of other key experiments, and nuclear plant experience, the training essentially provides hand-on experience in a simulated performance environment.



## MAAP Support/Applications:

The Modular Accident Analysis Program (MAAP) has been developed and maintained by Fauske & Associates since the beginning of the code in 1981. In addition to developing and testing this integral plant model, FAI has provided support on the use of MAAP for a wide range of plant evaluations. Examples of this support include:

- ✦ Design basis evaluations
- ✦ Level 1 and Level 2 success criteria for Probabilistic Risk Assessments (PRAs)
- ✦ Evaluations of time intervals available for operator response
- ✦ Radiological source term assessments
- ✦ LERF quantification
- ✦ Integration of MAAP or selected MAAP models into full scope control room simulators
- ✦ Plant evaluations for all operating modes
- ✦ Accident management guidance evaluations

In these assessments, it has been observed that the use of an integral plant model provides the necessary overall perspective of the plant and operator responses for decision making.



WORLD LEADER IN NUCLEAR AND CHEMICAL PROCESS SAFETY

16W070 83RD STREET • BURR RIDGE, ILLINOIS 60527  
(877) FAUSKE1 OR (630) 323-8750 • FAX: (630) 986-5481 • E-MAIL: INFO@FAUSKE.COM • FAUSKE.COM